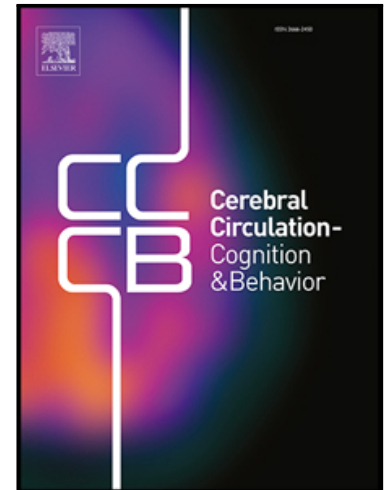


Journal Pre-proof

Decreased integrity of the monoaminergic tract is associated with a positive response to MPH in patients with vascular cognitive impairment - proof of principle study STREAM-VCI

Jolene F Leijenaar , Silvia Ingala , Carole H Sudre ,
Henk JMM Mutsaerts , Anna E. Leeuwis , Wiesje M van der Flier ,
Philip Scheltens , Henry C Weinstein , Frederik Barkhof ,
Joop van Gerven , Geert Jan Groeneveld , Niels D Prins



PII: S2666-2450(22)00093-9
DOI: <https://doi.org/10.1016/j.cccb.2022.100128>
Reference: CCCB 100128

To appear in: *Cerebral Circulation - Cognition and Behavior*

Received date: 8 October 2021
Revised date: 30 January 2022
Accepted date: 21 February 2022

Please cite this article as: Jolene F Leijenaar , Silvia Ingala , Carole H Sudre ,
Henk JMM Mutsaerts , Anna E. Leeuwis , Wiesje M van der Flier , Philip Scheltens ,
Henry C Weinstein , Frederik Barkhof , Joop van Gerven , Geert Jan Groeneveld , Niels D Prins ,
Decreased integrity of the monoaminergic tract is associated with a positive response to MPH in patients with vascular cognitive impairment - proof of principle study STREAM-VCI, *Cerebral Circulation - Cognition and Behavior* (2022), doi: <https://doi.org/10.1016/j.cccb.2022.100128>

This is a PDF file of an article that has undergone enhancements after acceptance, such as the addition of a cover page and metadata, and formatting for readability, but it is not yet the definitive version of record. This version will undergo additional copyediting, typesetting and review before it is published in its final form, but we are providing this version to give early visibility of the article. Please note that, during the production process, errors may be discovered which could affect the content, and all legal disclaimers that apply to the journal pertain.

© 2022 Published by Elsevier B.V.
This is an open access article under the CC BY-NC-ND license
(<http://creativecommons.org/licenses/by-nc-nd/4.0/>)

Decreased integrity of the monoaminergic tract is associated with a positive response to MPH in patients with vascular cognitive impairment - proof of principle study STREAM-VCI

Jolien F Leijenaar^{1,*}, MD, Silvia Ingala², MD, Carole H Sudre^{3,4}, PhD, Henk JMM Mutsaerts^{2,5}, MD, PhD, Anna E. Leeuwis¹, PhD, Wiesje M van der Flier^{1,6}, PhD, Philip Scheltens¹, MD, PhD, Henry C Weinstein⁷, MD, PhD, Frederik Barkhof^{2,8}, MD, PhD, Joop van Gerven⁹, MD, PhD, Geert Jan Groeneveld^{9,10}, MD, PhD, Niels D Prins^{1,11}, MD, PhD

¹Alzheimer Center & Department of Neurology, Amsterdam Neuroscience, VU University Medical Center, Amsterdam UMC, Amsterdam, The Netherlands

²Department of Radiology and Nuclear Medicine, Amsterdam Neuroscience, VU University Medical Center, Amsterdam UMC, Amsterdam, The Netherlands

³School of Biomedical Engineering and Imaging Sciences, King's College London, London, United Kingdom.

⁴Dementia Research Centre, Institute of Neurology, University College London, London, United Kingdom

⁵Department of Radiology and Nuclear Medicine, University Hospital Ghent, Ghent, Belgium

⁶Department of Epidemiology, Amsterdam Neuroscience, VU University Medical Center, Amsterdam UMC, Amsterdam, The Netherlands

⁷Onze Lieve Vrouwe Gasthuis West, Department of Neurology, Amsterdam, The Netherlands.

⁸Institutes of Neurology and Healthcare Engineering, UCL, London, United Kingdom

⁹Centre for Human Drug Research, Leiden, The Netherlands.

¹⁰Department of Anesthesiology, Leiden University Medical Center, Leiden, NL

¹¹Brain Research Center, Amsterdam, The Netherlands

* **Corresponding author:** drs Jolene Leijenaar, Amsterdam UMC - VUMC location:
Amsterdam UMC Locatie VUmc, Netherlands, E-mail: j.leijenaar@amsterdamumc.nl

Highlights

- The STREAM-VCI is a single center, double-blind, three-way, cross-over study, in 30 VCI patients investigating the immediate effect of a single dose methylphenidate and galantamine on central nervous system functions
- In the current study we investigated differences in measures for cerebrovascular disease, structural damage to specific neurotransmitter systems, cerebral perfusion, and Alzheimer (AD) pathology, between patients with vascular cognitive impairment (VCI) who responded to either methylphenidate or galantamine and patients who did not respond
- We found that decreased integrity of the monoaminergic neurotransmitter system is associated with a positive response to MPH in patients with VCI.
- In this small group of patients, we did not find an association between MRI measures and a positive response to galantamine, but we did find that responsiveness may be related to AD pathology

Abstract

Background

Patients with vascular cognitive impairment (VCI) are very heterogeneous in both symptoms and type of cerebrovascular pathology. This might be an important reason why there is no symptomatic treatment available for VCI patients. In this study, we investigated in patients with VCI, whether there was an association between a positive response to methylphenidate and galantamine and the type of cerebrovascular disease, structural damage to specific neurotransmitter systems, cerebral perfusion, and presence of co-morbid Alzheimer (AD) pathology.

Methods

We included 27 VCI patients (mean age 67years \pm 8,30% female) from the STREAM-VCI trial who received placebo, methylphenidate(10mg), and galantamine(16mg) in a single challenge, cross-over design. In this study, we classified patients improving on a task for executive functioning after methylphenidate compared to placebo as methylphenidate responders (MPH+; resp. non-responders, MPH-) and patients improving on a task for memory after galantamine compared to placebo as galantamine responders (GAL+; resp. non-responders, GAL-). On baseline MRI, we visually assessed measures of cerebrovascular disease, automatically segmented white matter hyperintensities, used diffusion tensor imaging to visualize the integrity of monoaminergic and cholinergic neurotransmitter systems with mean diffusivity (MD) and fractional anisotropy (FA). Comorbid AD pathology was assessed using CSF or amyloid-PET. We tested differences between responders and non-responders using ANOVA, adjusting for age and sex.

Results

Nine patients were MPH+ vs 18 MPH-. MPH+ had higher MD (1.22 \pm 0.07vs 0.94 \pm 0.05);p=.001) and lower FA(0.38 \pm .01vs 0.43 \pm .01);p=.04) in the monoaminergic tract compared to MPH-. Eight patients were GAL+ and 18 GAL-. We found no differences between GAL+ and GAL- in any of the MRI measures. Information on co-morbid AD

pathology was present in 17 patients. AD pathology tended to be more frequent in GAL+ vs GAL- (5(71%) vs 2(20%); $p=.06$).

Conclusions

In patients with VCI, we found that decreased integrity of the monoaminergic tract is associated with a positive response to MPH. Responsiveness to galantamine may be related to co-morbid AD pathology.

Key words: *Vascular cognitive impairment; dementia; methylphenidate; galantamine; cognition; small vessel disease; vascular disease; clinical trial*

Introduction

Vascular cognitive impairment (VCI) is a common cause of cognitive impairment and dementia, with executive dysfunction and memory impairment as its most frequent cognitive symptoms(1).

In VCI, executive dysfunction is thought to be caused by damage to the monoaminergic system. An important tract of the monoaminergic system is the noradrenergic tract. This tract projects mainly from the locus coeruleus to the frontal lobe(2). Methylphenidate may improve executive functioning by increasing the concentrations of dopamine and norepinephrine in the synaptic cleft of this tract(3).

Memory impairment in VCI is thought to be related to a defect of the cholinergic system. An important part of the tract for memory is thought to project from the cholinergic basal forebrain to the hippocampus(4-6). Galantamine increases the availability of acetylcholine in

the synaptic cleft of the cholinergic neurotransmitter system, leading to better memory performance(7).

We previously reported that methylphenidate improved executive functioning in VCI patients, but that galantamine did not improve memory function on a group level(8). This is in line with results from other studies(3,9,10). However, patients with VCI constitute a heterogeneous group, both with regard to symptomatology and to underlying pathology. Thus far, interindividual differences between VCI patients in their response to particular drugs are not well understood. Omitting to take this heterogeneity into account may be one of the reasons why drug intervention studies failed to demonstrate any cognitive improvement in VCI. It might be possible that specific patients respond to a particular pharmacological challenge, even though on group level no effects on cognition are seen.

Here, we hypothesize that a response to methylphenidate and galantamine is most likely in case of damage to the monoaminergic (methylphenidate) and cholinergic (galantamine) neurotransmitter systems. This hypothesis provides a window of opportunity for personalized therapy, administering specific symptomatic drugs based on the specific vascular injury reported in the patient affecting one or more neurotransmitter systems. Diffusion tensor imaging (DTI) can be used to visualize white matter tracts that are part of the monoaminergic and cholinergic neurotransmitter system. DTI can provide an indication of microstructural damage to white matter pathways by measuring water diffusivity, resulting in measures of fractional anisotropy (FA) and mean diffusivity (MD). Vascular brain injury leading to damage to these specific white matter tracts may thus result in the aforementioned cognitive deficits.

In addition to structural vascular markers, we measured cerebral blood flow (CBF) as a functional marker of total cerebrovascular function and disease severity(11,12). We measured CBF with arterial spin labeling (ASL) in our patients to see whether a difference exists between responders and non-responders. In a subset of patients, we assessed the presence of comorbid AD pathology in CSF or on amyloid-PET.

In the current study, we investigated whether structural brain changes and cerebral perfusion at baseline (so not in response to therapy) are associated with a response to methylphenidate on executive functioning and with a response to galantamine on memory. Furthermore, we assessed whether these associations are modified by comorbid AD pathology.

Methods

The data that support the findings of this study are available from the corresponding author upon reasonable request.

Study design

We included patients from the STREAM-VCI(13,14). This is a single center, double-blind, three-way, cross-over study, in 30 VCI patients investigating the immediate effect of a single dose methylphenidate and galantamine on central nervous system functions. In short, patients diagnosed with VCI according to the definitions of the American Heart Association/American Stroke Association were recruited from outpatient memory clinic(15). The most important inclusion criteria were: a clinical diagnosis of vascular mild cognitive impairment (MCI) or vascular dementia, with imaging evidence of vascular brain injury (white matter hyperintensities (WMH; Fazekas score ≥ 2), (lacunar) infarcts, and or (micro)hemorrhages), an MMSE score ≥ 16 and a Clinical Dementia Rating score of 0.5-1.0. Patients received in

random order a single dose of methylphenidate 10mg, galantamine 16mg, and placebo on three separate visits with a washout period of one week between visits. Presence of comorbid Alzheimer's disease (AD) pathology / a clinical diagnosis of both VCI and AD were not an exclusion criterion. The study design and main results have been published previously(8,14).

Due to side effects after administration of galantamine, or personal circumstances, some patients did not complete all study visits and thus did not receive both study drugs and/or placebo. All patients provided written informed consent. The protocol of this study was approved by the Medical Ethics Committee of Amsterdam UMC and the competent authority (CCMO). The study was conducted according to the Dutch Act on Medical Research involving Human Subjects (WMO) and in compliance with good clinical practice (ICH-GCP). The trial is registered at the European Union Clinical Trials Register (2013-003396-35).

Patients

Patients were included in the present study, when test results on the placebo visit, and on either the methylphenidate visit or galantamine visit, or both, were available. Twenty-seven patients had available data for methylphenidate and 26 for galantamine.

Response to methylphenidate

Response on methylphenidate was defined based on the primary outcome measure for this intervention, namely the adaptive tracker. The adaptive tracker is a pursuit-tracking task that measures executive functioning(16). The duration of the task is 3 minutes, preceded by a 30-second run-in period in which the data are not recorded. The measurement unit for the

adaptive tracker is the average velocity as percentage of the maximum velocity possible. In the current study, patients had a range of 3.2% to 29.6% of the maximum speed possible. The adaptive tracker was performed 1,5 hour and one hour before drug administration and three times after (approximately 1, 2,5 and 3,5 hours after). We defined response on the adaptive tracker as a mean change on the three measurements after methylphenidate administration of 2%-units (1 SD) relative to the mean change after placebo(14,17). The cut-off value was predefined, and a difference of 2% on the adaptive tracker after methylphenidate is a difference of about 1 standard deviation.

There were 9 methylphenidate responders (MPH+) and 18 methylphenidate non-responders (MPH-).

Response to galantamine

Response on galantamine was defined based on the primary outcome measure for this intervention, namely the Visual Verbal Learning Task-15(VVLT-15). The VVLT-15 is a verbal memory task that measures episodic memory and was chosen as the primary task for the quantification of galantamine effects in this study. We defined response on the VVLT-15 as remembering an additional 2 or more words after 3 trials on the immediate recall of the VVLT-15 after galantamine relative to placebo based on an previous study(14,18). The cut-off value was pre-defined and a difference of 2 words is also a difference of about 1 standard deviation. The VVLT-immediate was performed approximately 2 hours after drug administration. There were eight galantamine responders (GAL+) and 18 galantamine non-responders (GAL-).

Magnetic resonance imaging

Protocol

All patients were scanned on a single 3T whole body MRI scanner (MR750; GE Medical Systems Milwaukee, WI, USA) at baseline, using an eight-channel in vivo head coil. Patients were only scanned at baseline, prior to any pharmacological challenge. The scanning protocol lasted approximately 50 minutes. All scans were inspected for incidental findings and visually rated for quality control and scoring. See supplementary methods for a detailed description of the scanning protocol and quantification methods of the WMH, gray matter volume and brain perfusion.

Visual scoring

We used a previously described protocol for markers of cerebral small vessel disease (SVD) including WMH, cerebral microbleeds and lacunes(14). In short, WMH were rated using the Fazekas scale (ranging from 0-3) on the FLAIR images(19). Microbleeds were defined as small (maximum diameter of 10 mm) round hypointense foci on T2*-weighted images. Lacunes were defined as deep lesions (3-15 mm) with cerebral spinal fluid-like signal on all sequences. Number of microbleeds and lacunes were counted. Cortical infarcts were assessed visually. Medial temporal lobe atrophy was rated on the coronal reconstructions of the T1-weighted images with scores ranging from 0-4(20).

White Matter hyperintensities

WMH were automatically segmented with a previously described algorithm using T1-weighted and FLAIR images(21). All WMH segmentations were visually checked by an experienced rater. One patient was excluded because of motion artefacts.

Gray matter volumes and Brain perfusion

Total brain and gray matter volumes and perfusion were calculated using ExploreASL(pre-release version 0.9.9) (22) toolbox based on Statistical Parametric Mapping (SPM) 12 (23,24). CBF quantification could not be performed in 4 patients due to low ASL image quality.

The GM spatial coefficient of variance (CoV) was defined as the standard deviation of GM CBF divided by the mean GM CBF(25).

Neurotransmitter systems

DTI were preprocessed to correct for motion, EPI distortion and eddy currents. The HARDI atlas was used to identify the tracts of interest using MRTrix for their reconstruction since the tracts of interest did not exist already in an atlas. For the monoaminergic tract, tractography was performed from the locus coeruleus defined from a probabilistic atlas(26) and the frontal cortex including the anterior cingulate gyrus, (anterior, medial, posterior and lateral) orbital gyrus, central and frontal operculum, frontal pole, gyrus rectus, medial frontal cortex, superior and middle frontal gyrus, subcallosal area, triangular, orbital and opercular part of the inferior frontal gyrus (Figure 1a). For the cholinergic tract, the tract of interest was defined between the hippocampus and the basal forebrain cholinergic nuclei using a statistical atlas described elsewhere (Figure 1b)(27).

We used the regions of interest in a population DTI atlas to create a mask of the tract between the two regions of interest. The weighted density masks of tracts created in template space were propagated to subject space using NiftyReg. These were used to determine the values of FA and MD within individual tracts(28). Tract lesion occupancy was defined as the ratio between the tract volume occupied by a lesion and the total tract volume.

Comorbid Alzheimer pathology

For a subgroup of patients (N=17), information on AD biomarkers was known at inclusion. Presence of comorbid AD pathology was based on amyloid- β and tau levels in CSF (N=16) or on an amyloid-PET scan(N=1)(29). Patients were diagnosed with comorbid AD pathology when their CSF amyloid- $\beta_{42} \leq 640$ pg/ml, their tau levels were >375 and ptau levels >52 . The amyloid PET (^{18}F -Florbetaben) scan was labeled as amyloid positive or negative based on visual reading by an experienced nuclear medicine physician. Nine of the 17(53%) patients could be diagnosed with co-morbid AD pathology based on their CSF or the amyloid PET.

Outcome

Our primary outcome was the microstructural integrity of the specific neurotransmitter tracts, expressed as DTI measurements of FA and MD in the full tract. We only investigated differences in the monoaminergic tract between responders and non-responders to methylphenidate and differences in the cholinergic between responders and non-responders to galantamine in accordance with our research question.

Secondary outcome measures were WMH lesion volume, gray matter volume, cortical CBF and spatial CoV, and comorbid AD pathology.

Data analysis

Analyses were performed in SPSS (version 22, IBM, Chicago IL, USA). Differences in demographic characteristics and visual scoring for markers of cerebral SVD were assessed using ANOVA for continuous variables and χ^2 - or Mann-Whitney U-tests for dichotomous or categorical variables.

We investigated differences between responders and non-responders with exploratory data analysis for all quantitative MRI measures using ANOVA, adjusted for age and sex. WMH was expressed as fraction of the total intracranial volume.

Normality of data was judged by using visual inspection in combination with values of skewness and kurtosis. We applied log-transformation for skewed distributions. Analyses were done separately for methylphenidate and galantamine. Because of the small sample size, we did not perform correction for multiple testing.

Results

Twenty-seven patients (67 ± 8 years, 8 (30%) were female) had information available for methylphenidate analyses. Nine (33%) patients were MPH+ and 18 (67%) MPH-. See Supplementary Figure 1 for the histogram showing the differences in change from baseline on the adaptive tracker between methylphenidate and placebo. Twenty-six VCI patients had data available for galantamine analyses with a mean age of 67 ± 8 years, 7 (27%) were female.

Eight (31%) patients were GAL+ and 18 GAL-. Supplementary Figure 2 shows the histogram on the difference in remembered words on the VVLT between galantamine and placebo.

More information on total group characteristics and on patients who responded to both galantamine and methylphenidate can be found in the Supplementary Results. Results on the

adaptive tracker after methylphenidate compared to placebo and on the VVLT after galantamine on group level have been published previously (8).

Methylphenidate

All patients had cerebral SVD on MRI and 7 (26%) patients also presented with one or more cortical infarcts. MPH+ did not differ from the MPH- on baseline characteristics including Fazekas score for WMH, microbleeds, lacunes or cortical infarcts. No differences in presence of AD pathology was seen between responders and non-responders (Table 1).

In MPH+ patients, we found higher MD and lower FA values in the full monoaminergic tract, compared to MPH- (Table 2). We also found larger GM volumes in MPH+ compared to MPH-. We did not observe any differences in WMH volumes, lesion tract occupancy, whole brain perfusion or spatial CoV.

Galantamine

GAL+ patients were more often female compared to GAL- patients. There were no differences in vascular risk factors or MRI markers of vascular brain injury between GAL+ and GAL-. We found that responders to galantamine tended to more often also have AD pathology compared to non-responders ($p=0.06$; Table 1).

No differences in WMH or gray matter volumes, cholinergic tract lesion occupancy, MD or FA values of the full cholinergic tract, or total brain perfusion were found (Table 2).

Discussion

In the proof-of-principle STREAM-VCI trial, we found that a positive response to methylphenidate or galantamine was associated with different pathology; VCI patients who responded to methylphenidate had reduced microstructural integrity of the monoaminergic tract as identified using DTI compared to the non-responders. No differences were found between patients who responded to galantamine and those who did not, although a trend for more AD pathology was seen.

Previously, we reported that on group level a single dose of methylphenidate 10mg can lead to acute improvement of executive functioning in VCI patients(8). In order to move towards personalized medicine, it is important to identify VCI patients who respond to a pharmacological challenge on an individual level. Here, we show that a pharmacological response to methylphenidate 10mg is more likely when damage of the monoaminergic neurotransmitter system is present between the locus coeruleus and the frontal cortex. The monoaminergic system, especially the noradrenergic tracts, is important for several cognitive functions, such as executive functioning(2). When noradrenergic transmission in the prefrontal cortex is decreased, executive function becomes impaired(30). Vascular lesions are known to cause structural damage to white matter tracts and earlier studies have shown that microstructural damage measured with DTI in specific tracts in VCI patients can explain variance in cognitive impairment, over and above the presence of visible MRI damage, such as WMH and lacunes(31-33). We found no differences in total vascular brain injury or total brain perfusion.

These results provide support that damage to a monoaminergic tract is more important than total burden of vascular brain injury for a positive response to methylphenidate on executive

functioning and DTI-based quantification of such damage might be useful to select these patients.

So far, acetylcholinesterase-inhibitors are only registered for AD patients(34). In line with other studies, we previously reported that in VCI patients galantamine did not improve cognition(8,10). The application of acetylcholinesterase inhibitors is based on the cholinergic hypothesis of AD, according to which the number of basal forebrain cholinergic neurons that project to the cortex and hippocampus are decreased(35). In VCI, it is thought that not the nucleus itself is damaged, but the subcortical cholinergic tracts that project from the nucleus(36). Therefore, we hypothesized that responders to galantamine would have more damaged cholinergic tracts. However, we did not find any differences between responders and non-responders to galantamine in the microstructure or the load of vascular lesions in the cholinergic tract between the basal forebrain cholinergic neurons and the hippocampus.

An alternative hypothesis is that the response to galantamine in VCI patients can be explained by comorbid AD pathology. Comorbid AD pathology is a frequent finding in VCI(37). Here, responders to galantamine tended to have more associated AD pathology than non-responders. These results must be taken with caution, since sample size was small, and hence results reached only trend significance. However, these results are consistent with a previous trial showing a beneficial effect of galantamine in VCI patients with comorbid AD(38).

Furthermore, loss of cholinergic function has been shown to be greater in VCI patients with concurrent Alzheimer pathology than in patients with pure VCI(5). It is possible that VCI patients with co-morbid AD pathology may benefit from cholinesterase inhibitors.

In addition to relations between effects of a monoaminergic or cholinergic challenge with abnormalities of established neurotransmitter tracts, we also explored relationships with other functional structural and MRI-parameters i.e. ASL-derived measures of CBF and spatial CoV.

Quantifying CBF in VCI patients poses some challenges, as this measure depends on the correct estimation of label arrival time in the cortex. In patients with a compromised cerebral vasculature, such as in VCI, this condition may not always be met. Despite our relatively long post-labeling delay of 2025ms - which is recommended for the elderly and vascularly compromised(39), four of our patients were excluded from the CBF analysis because the label had incompletely reached the cerebral cortex at the time of scanning. Apparently, this population requires a longer post-labeling delay, or a different ASL technique for accurately quantifying cortical perfusion in all patients. By using the spatial CoV as a marker of the amount of label arriving in the proximal vessels and/or distal brain tissue, we still managed to generate an estimate of the cerebrovascular sufficiency of the VCI patients(25).

A general difficulty with tractography in patients with vascular brain injury is that tracts may not be identified correctly when FA is too low in regions with WMH. We used a DTI-specific atlas to identify the neurotransmitter tracts and then propagated the tracts to the individual subjects. By using this method, the tracts could be identified for all patients, despite the extensive amount of WMH.

For the study we operationalized the monoaminergic tract as one projection arising from the locus coeruleus to frontal cortex(2). This is however only a section of the entire monoaminergic system and belongs to the noradrenergic tract of the monoaminergic system.

The entire monoaminergic system encompasses much more, such as for example the dopaminergic tract arising from the substantia nigra, and the ventro tegmental area and the serotonergic tract, arising from the nucleus raphe(40). This is also true for the cholinergic tract. We operationalized the identification of the cholinergic system through tractography-based tract identification connecting the basal forebrain nuclei to the hippocampus.

Nonetheless, it should be noted that the cholinergic system has other projections to the

brain(6). As this was a proof-of-principle study, we investigated only these parts of the neurotransmitter systems, as these tracts are thought to be important in executive functioning and memory. This rationale, however, can be extended to other neurotransmitter tracts and other symptoms, such as neuropsychiatric symptoms which are also frequently seen in VCI.(37) Perhaps differences between methylphenidate or galantamine responders/non-responders exist in other parts of these neurotransmitter systems or in different tracts, than the ones that we primarily identified for this study, which are also important for cognitive and/or neuropsychiatric symptoms.

A strength of this trial is the case cross-over design. Using such a within-subject design has relatively high statistical power allowing a relatively low sample size. Moreover, the quantification of MRI outcomes on multiple modalities allowed us to assess different aspects on brain pathology using continuous measures

There are some limitations of the study that need to be addressed. In this proof-of-principle study, patients received a single dose of methylphenidate 10mg and galantamine 16mg. This is a potent pharmacological challenge capable of stimulating responsive neurotransmitter systems, but this response is not necessarily indicative of therapeutic effects in every individual patient. The results of this study give direction that methylphenidate and galantamine may be effective in specific patients with VCI and should be confirmed by further research. Future studies are needed to investigate the clinical effect on cognition when administered for a longer period of time in a larger group of patients, after prior selection of predominant neurotransmitter system abnormalities. Furthermore, future studies should extend the results of this study by investigating different drugs able to boost neurotransmitter systems and other (parts of these) neurotransmitter tracts and vascular brain injury.

In conclusion, we found that decreased integrity of the monoaminergic neurotransmitter system is associated with a positive response to MPH in VCI patients, whereas responsiveness to cholinergic treatment may be related to presence of comorbid amyloid pathology. These findings may contribute to personalized treatment of VCI in the future.

Acknowledgement/funding

Research of Alzheimer center Amsterdam is part of the neurodegeneration research program of Amsterdam Neuroscience. Alzheimer Center Amsterdam is supported by Stichting Alzheimer Nederland and Stichting VUmc fonds. The STREAM-VCI is funded by Alzheimer Nederland (project number WE.03-2012-02).

WF is recipient of a grant for OTAPA (#LSHM19051), which is co-funded by the PPP Allowance made available by Health-Holland, Top Sector Life Sciences & Health. The chair of WF is supported by the Pasma Stichting. FB is supported by the NIHR biomedical research center at UCLH. CS is supported by an Alzheimer's Society Junior Fellowship (AS-JF-17-011)

References

1. Bowler JV. Vascular cognitive impairment. *J Neurol Neurosurg Psychiatry*. 2005;76 Suppl 5:v35-44.
2. Robbins TW, Arnsten AF. The neuropsychopharmacology of fronto-executive function: monoaminergic modulation. *Annu Rev Neurosci*. 2009;32:267-87.
3. Galynker I, Ieronimo C, Miner C, Rosenblum J, Vilkas N, Rosenthal R. Methylphenidate treatment of negative symptoms in patients with dementia. *J Neuropsychiatry Clin Neurosci*. 1997;9(2):231-9.
4. Bohnen NI, Muller ML, Kuwabara H, Constantine GM, Studenski SA. Age-associated leukoaraiosis and cortical cholinergic deafferentation. *Neurology*. 2009;72(16):1411-6.
5. Roman GC, Kalra RN. Vascular determinants of cholinergic deficits in Alzheimer disease and vascular dementia. *Neurobiol Aging*. 2006;27(12):1769-85.

6. Selden NR, Gitelman DR, Salamon-Murayama N, Parrish TB, Mesulam MM. Trajectories of cholinergic pathways within the cerebral hemispheres of the human brain. *Brain*. 1998;121 (Pt 12):2249-57.
7. Albuquerque EX, Santos MD, Alkondon M, Pereira EF, Maelicke A. Modulation of nicotinic receptor activity in the central nervous system: a novel approach to the treatment of Alzheimer disease. *Alzheimer Dis Assoc Disord*. 2001;15 Suppl 1:S19-25.
8. Leijenaar JF, Groeneveld GJ, Klaassen ES, Leeuwis AE, Scheltens P, Weinstein HC, van Gerven JMA, Barkhof F, van der Flier WM, Prins ND. Methylphenidate and galantamine in patients with vascular cognitive impairment-the proof-of-principle study STREAM-VCI. *Alzheimers Res Ther*. 2020;12(1):10.
9. Herrmann N, Rothenburg LS, Black SE, Ryan M, Liu BA, Busto UE, Lanctot KL. Methylphenidate for the treatment of apathy in Alzheimer disease: Prediction of Response Using Dextroamphetamine Challenge. *J Clin Psychopharm*. 2008;28(3):296-301.
10. Farooq MU, Min J, Goshgarian C, Gorelick PB. Pharmacotherapy for Vascular Cognitive Impairment. *CNS Drugs*. 2017;31(9):759-76.
11. Farkas E, Luiten PG. Cerebral microvascular pathology in aging and Alzheimer's disease. *Prog Neurobiol*. 2001;64(6):575-611.
12. Benedictus MR, Leeuwis AE, Binnewijzend MA, Kuijter JP, Scheltens P, Barkhof F, van der Flier WM, Prins ND. Lower cerebral blood flow is associated with faster cognitive decline in Alzheimer's disease. *Eur Radiol*. 2017;27(3):1169-75.
13. Leijenaar JF, Groot C, Sudre CH, Bergeron D, Leeuwis AE, Cardoso MJ, Carrasco FP, Laforce R, Jr., Barkhof F, van der Flier WM, et al. Comorbid amyloid-beta pathology affects clinical and imaging features in VCD. *Alzheimers Dement*. 2020;16(2):354-64.
14. Leijenaar JF, Groeneveld GJ, van der Flier WM, Scheltens P, Klaassen ES, Weinstein HC, Biessels GJ, Barkhof F, Prins ND. Symptomatic Treatment of Vascular Cognitive Impairment (STREAM-VCI): Protocol for a Cross-Over Trial. *JMIR Res Protoc*. 2018;7(3):e80.
15. Gorelick PB, Scuteri A, Black SE, Decarli C, Greenberg SM, Iadecola C, Launer LJ, Laurent S, Lopez OL, Nyenhuis D, et al. Vascular contributions to cognitive impairment and dementia: a statement for healthcare professionals from the american heart association/american stroke association. *Stroke*. 2011;42(9):2672-713.
16. van Gerven J. Chapter 4. Functional measurements of central nervous system drug effects in early human drug development. In: Nomikos G, Douglas Feltner D, editors. *Translational Medicine in CNS Drug Development*. 29: Elsevier Academic Press; 2019.
17. Busse A, Hensel A, Guhne U, Angermeyer MC, Riedel-Heller SG. Mild cognitive impairment: long-term course of four clinical subtypes. *Neurology*. 2006;67(12):2176-85.
18. Baakman AC, Gavan C, Van Doeselaar L, Bajenaru OA, Camps L, Swart ELN, Lemstra AW, Scheltens P, Cohen AF, Van Gerven JM, et al. Acute Response to a Cholinergic Challenge with Galantamine in Patients with Alzheimer's Disease. *J Clin Pharmacol Ther* 2020 (submitted).
19. Fazekas F, Chawluk JB, Alavi A, Hurtig HI, Zimmerman RA. MR signal abnormalities at 1.5 T in Alzheimer's dementia and normal aging. *AJR Am J Roentgenol*. 1987;149(2):351-6.
20. Scheltens P, Launer LJ, Barkhof F, Weinstein HC, van Gool WA. Visual assessment of medial temporal lobe atrophy on magnetic resonance imaging: interobserver reliability. *J Neurol*. 1995;242(9):557-60.
21. Sudre CH, Cardoso MJ, Bouvy WH, Biessels GJ, Barnes J, Ourselin S. Bayesian model selection for pathological neuroimaging data applied to white matter lesion segmentation. *IEEE Trans Med Imaging*. 2015;34(10):2079-102.
22. Mutsaerts H, Petr J, Groot P, Vandemaele P, Ingala S, Robertson AD, Václavů L, Groote I, Kuijter H, Zelaya F, et al. ExploreASL: an image processing pipeline for multi-center ASL perfusion MRI studies. *bioRxiv*. 2019:845842.
23. Mutsaerts H, Petr J, Thomas DL, De Vita E, Cash DM, van Osch MJP, Golay X, Groot PFC, Ourselin S, van Swieten J, et al. Comparison of arterial spin labeling registration strategies in the

- multi-center GENetic frontotemporal dementia initiative (GENFI). *J Magn Reson Imaging*. 2018;47(1):131-40.
24. Ashburner J. SPM: a history. *Neuroimage*. 2012;62(2):791-800.
 25. Mutsaerts HJ, Petr J, Vaclavu L, van Dalen JW, Robertson AD, Caan MW, Masellis M, Nederveen AJ, Richard E, MacIntosh BJ. The spatial coefficient of variation in arterial spin labeling cerebral blood flow images. *J Cereb Blood Flow Metab*. 2017;37(9):3184-92.
 26. Tona KD, Keuken MC, de Rover M, Lakke E, Forstmann BU, Nieuwenhuis S, van Osch MJP. In vivo visualization of the locus coeruleus in humans: quantifying the test-retest reliability. *Brain Struct Funct*. 2017;222(9):4203-17.
 27. Teipel SJ, Flatz WH, Heinsen H, Bokde AL, Schoenberg SO, Stockel S, Dietrich O, Reiser MF, Moller HJ, Hampel H. Measurement of basal forebrain atrophy in Alzheimer's disease using MRI. *Brain*. 2005;128(Pt 11):2626-44.
 28. Modat M, Ridgway GR, Taylor ZA, Lehmann M, Barnes J, Hawkes DJ, Fox NC, Ourselin S. Fast free-form deformation using graphics processing units. *Comput Methods Programs Biomed*. 2010;98(3):278-84.
 29. Zwan M, van Harten A, Ossenkoppele R, Bouwman F, Teunissen C, Adriaanse S, Lammertsma A, Scheltens P, van Berckel B, van der Flier W. Concordance between cerebrospinal fluid biomarkers and [¹¹C]PIB PET in a memory clinic cohort. *J Alzheimers Dis*. 2014;41(3):801-7.
 30. Chandler DJ. Evidence for a specialized role of the locus coeruleus noradrenergic system in cortical circuitries and behavioral operations. *Brain Res*. 2016;1641(Pt B):197-206.
 31. Biesbroek JM, Kuijf HJ, van der Graaf Y, Vincken KL, Postma A, Mali WP, Biessels GJ, Geerlings MI, Group SS. Association between subcortical vascular lesion location and cognition: a voxel-based and tract-based lesion-symptom mapping study. The SMART-MR study. *PLoS One*. 2013;8(4):e60541.
 32. Biesbroek JM, Weaver NA, Biessels GJ. Lesion location and cognitive impact of cerebral small vessel disease. *Clin Sci (Lond)*. 2017;131(8):715-28.
 33. Biesbroek JM, Leemans A, den Bakker H, Duering M, Gesierich B, Koek HL, van den Berg E, Postma A, Biessels GJ. Microstructure of Strategic White Matter Tracts and Cognition in Memory Clinic Patients with Vascular Brain Injury. *Dement Geriatr Cogn Disord*. 2017;44(5-6):268-82.
 34. Grutzendler J, Morris JC. Cholinesterase inhibitors for Alzheimer's disease. *Drugs*. 2001;61(1):41-52.
 35. Lojkowska W, Ryglewicz D, Jedrzejczak T, Minc S, Jakubowska T, Jarosz H, Bochynska A. The effect of cholinesterase inhibitors on the regional blood flow in patients with Alzheimer's disease and vascular dementia. *J Neurol Sci*. 2003;216(1):119-26.
 36. Kim HJ, Moon WJ, Han SH. Differential cholinergic pathway involvement in Alzheimer's disease and subcortical ischemic vascular dementia. *J Alzheimers Dis*. 2013;35(1):129-36.
 37. van der Flier WM, Skoog I, Schneider JA, Pantoni L, Mok V, Chen CLH, Scheltens P. Vascular cognitive impairment. *Nat Rev Dis Primers*. 2018;4:18003.
 38. Erkinjuntti T, Kurz A, Small GW, Bullock R, Lilienfeld S, Damaraju CV, Group G-I-S. An open-label extension trial of galantamine in patients with probable vascular dementia and mixed dementia. *Clin Ther*. 2003;25(6):1765-82.
 39. Alsop DC, Detre JA, Golay X, Gunther M, Hendrikse J, Hernandez-Garcia L, Lu H, MacIntosh BJ, Parkes LM, Smits M, et al. Recommended implementation of arterial spin-labeled perfusion MRI for clinical applications: A consensus of the ISMRM perfusion study group and the European consortium for ASL in dementia. *Magn Reson Med*. 2015;73(1):102-16.
 40. Trillo L, Das D, Hsieh W, Medina B, Moghadam S, Lin B, Dang V, Sanchez MM, De Miguel Z, Ashford JW, et al. Ascending monoaminergic systems alterations in Alzheimer's disease. translating basic science into clinical care. *Neurosci Biobehav Rev*. 2013;37(8):1363-79.

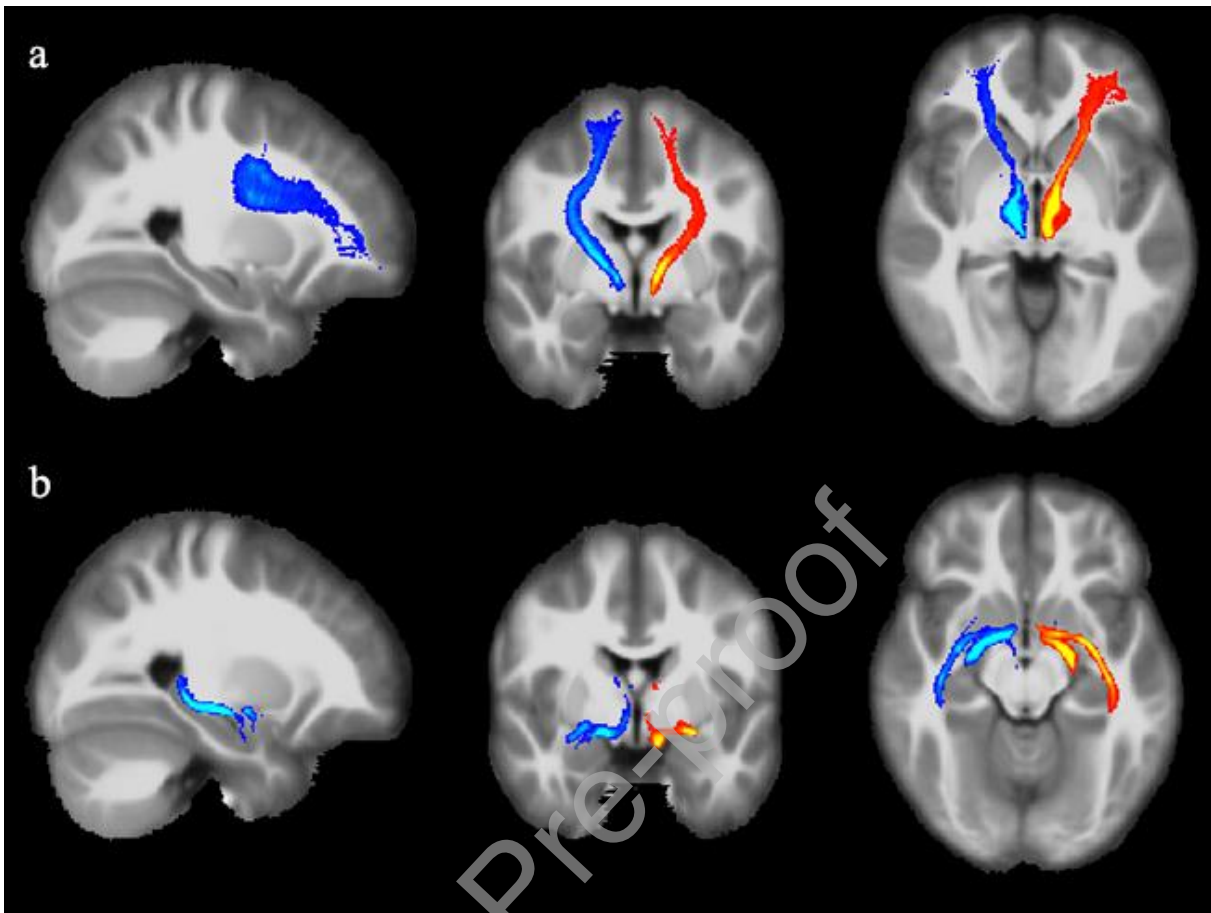


Figure 1. a) Monoaminergic tract from the locus coeruleus to the prefrontal cortex. b) Cholinergic tract from the cholinergic forebrain to the hippocampus, overlaid on the population-average T1-weighted image. The left tract is red, the right tract blue.

Table 1. Clinical features, vascular risk factors, and MRI characteristics for methylphenidate and galantamine analyses

Clinical and MRI features	MPH+	MPH-	GAL+	GAL-
	N=9	N=18	N=8	N=18
Clinical features				
Age	69±3	66±2	64 (3)	68 (2)
Females	3 (33)	5 (28)	5 (63)	2 (11) [†]
MMSE score	26±1	26±1	25 (1)	27 (1)
CDR	.5 (.5-1)	0.5 (.5-1)	.75 (.5-1)	.5 (.5-1)
Diagnosis MCI	5 (56)	8 (44)	4 (50)	9 (50)
Clinical VCI + AD	4 (44)	7 (39)	5 (63)	5 (28)

Amyloid pathology present*	3 (75)	4 (31)	5 (71)	2(20) [‡]
Vascular risk factors				
Hypertension	5 (56)	12 (68)	5 (63)	12 (67)
Hypercholesterolemia	3 (33)	9 (50)	3 (38)	9 (50)
Diabetes mellitus	0 (0)	3 (17)	1 (13)	2 (11)
Smoking	2 (22)	2 (11)	3 (38)	1 (6)
MRI characteristics				
WMH (Fazekas)	3 (2-3)	2 (2-3)	2 (2-2.75)	3 (2-3)
≥1 microbleed	7 (78)	13 (72)	6 (75)	13 (72)
≥1 lacune	4 (44)	9 (50)	4 (50)	9 (50)
≥1 cortical infarct	2 (22)	5 (28)	2 (25)	5 (28)
MTA	1 (1-2.25)	1.75 (1-2.5)	1 (1-2.25)	1.75 (1-2.5)

Numbers are mean±SE, median (IQR) or n (%)

Abbreviations: CDR= clinical dementia rate, GCA=global cortical atrophy, MCI=mild cognitive impairment, MMSE=Mini-Mental State Examination, MTA=medial temporal lobe atrophy, PCA = posterior cortical atrophy, WMH=white matter hyperintensities

*Total N = 17 patients

†p<0.05

‡p=0.06

Table 2. Differences in quantitative MRI characteristics between methylphenidate responders and non-responders

Qualitative MRI Markers	MPH+	MPH-	GAL+	GAL-
	N=9	N=17	N=8	N=17
Monoaminergic tract				
Lesion occupancy (%)	8.54 (1.86)	5.43 (1.36)	NA	NA
MD Full tract*	1.22 (0.07)	0.94 (0.05) [‡]	NA	NA
FA Full tract	0.38 (0.01)	0.43 (0.01) [§]	NA	NA

Cholinergic tract				
Lesion occupancy (%) [*]	NA	NA	1.25 (0.40)	1.37 (0.27)
MD Full tract	NA	NA	1.61 (0.09)	1.70 (0.06)
FA Full tract	NA	NA	0.33 (0.02)	0.33 (0.01)
WMH (%TIV)[*]				
Total	3.01 (0.57)	2.52 (0.42)	1.60 (0.54)	3.06 (0.37)
Frontal	1.72 (0.34)	1.36 (0.24)	0.83 (0.33)	1.72 (0.22)
Parietal	0.79 (0.15)	0.66 (0.11)	0.43 (0.14)	0.78 (0.10)
Temporal	0.23 (0.05)	0.22 (0.04)	0.14 (0.05)	0.24 (0.04)
Occipital	0.22 (0.05)	0.25 (0.04)	0.15 (0.05)	0.27 (0.04)
BGIT	0.05 (0.01)	0.04 (0.01)	0.04 (0.01)	0.05 (0.01)
Gray matter volume				
Total gray matter volume	0.60 (0.02)	0.57 (0.01)	0.54 (0.02)	0.60 (0.01)
Cortical perfusion				
Gray matter [†]	24.70 (1.89)	28.07 (1.43)	28.3 (1.9)	26.0 (1.5)
Spatial CoV	0.28 (0.02)	0.28 (0.02)	0.26 (0.01)	0.29 (0.01)

Numbers are means \pm SE,. Analyses were performed with log transformed values and adjusted for age and sex

WMH volumes were divided by TIV

MD numbers are $\times 10^{-3}$

Abbreviations: BGIT=basal ganglia and infratentorial, CoV = coefficient of variance,

FA=fractional anisotropy, MD=mean diffusivity, TIV=total intracranial volume,

WMH=white matter hyperintensities

* Analyses were performed with log transformed values

[†]Total N = 22 patients; 8 MPH+, 14 MPH-; 8 GAL+, 14 GAL

[‡]p<0.005

[§]p<0.05